

CSA cards are not
replaceable ~ so keep it safe!

To back up your card simply take a picture of
the back of your card or write down your card
number and we will still be able to run it.

If you would like us to back up your card,

It's Simple!

Email a picture of the back of your card
with your name in the subject line to
BlossomingAcres@gmail.com



Our farmshare gives you choice!

Don't like kale?

You will have total control of the plants,
produce, and yes, baked goods, that
you will receive.

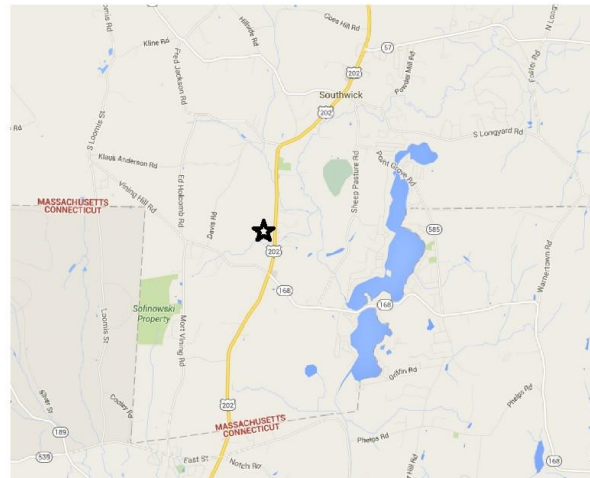
Plus 10 bonus items a season!

We at Blossoming Acres strive to
keep things local.

ALL of our produce is
ALWAYS non GMO, and if we
don't grow it, we get it from other
local farms that we know & trust.

After all

Know Your Farmer!
Know Your Food!



Blossoming Acres
249 College Highway
Southwick, Ma 01077

Open 7 days a week 9-6

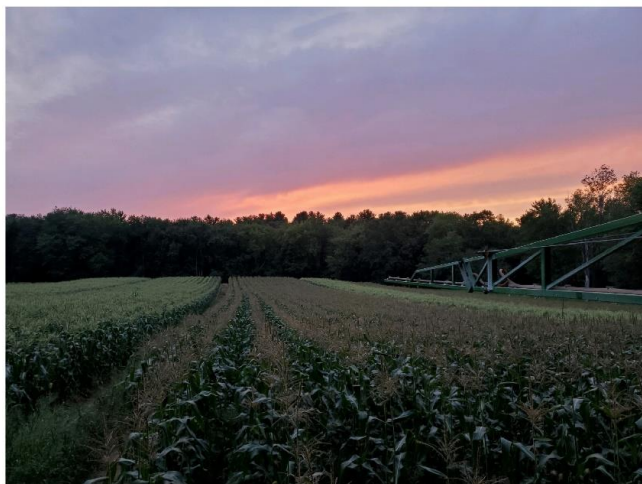
9-7 July-October

Blossoming Acres Farmshare Program



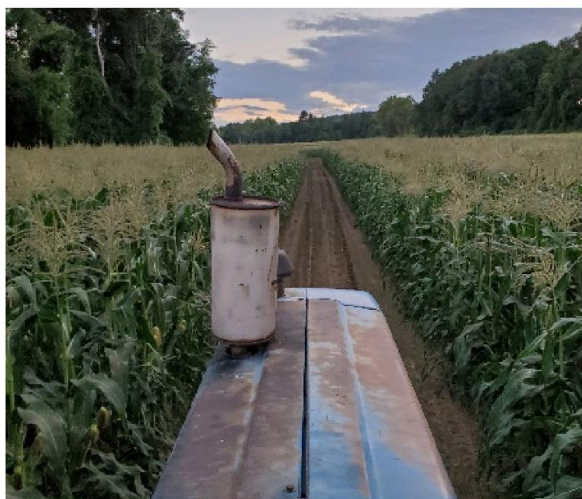
Buy Local- Buy Fresh!





An easy alternative to traditional CSA's

- Your farmshare card will run thru our credit card machine.
- Your card can be reloaded.
- No scheduled pick up time!
- Extras last one season
- Your farmshare card will not expire!



Farmshare cards can be used to
purchase anything that
we grow or produce!

Produce, Bedding Plants, Cut Flowers, Soup,
Baked Goods, & Frozen Store Made
Prepared Meals.

Yes, even our chicken pot pies!



We grow many different vegetables, which vary
depending on the season.



Tomatoes, Sweet
Corn, Squash,
Broccoli, Beans,
Eggplant, Peppers,
Onions, Cucumbers,
Carrots, Beets,
Radishes, Spinach, &
More!

Three Share Sizes Available

Early enrollment will be applied to people who enroll
December 1st thru March 15th.

After March 15th each share comes with a 10% bonus

\$200 Share

CSA card will be loaded with \$220

Early enrollment loaded with \$224 (12%)

\$350 Share

CSA card will be loaded with \$385

Early enrollment loaded with \$402.50 (15%)

\$600 Share

CSA card will be loaded with \$660

Early enrollment loaded with \$720 (20%)

All CSA members will also receive

10 bonus items for the season starting in June

CSA cards are currently redeemable in store only.

Notification for bonus products will be sent out via email.

If you do not receive your emails please check your spam folder

If you still do not receive them please check the email list at the
register for correct spelling



This section must be filled out by an employee!

NAME: _____

PHONE: _____

EMAIL: _____

SHARE SIZE _____

EMPLOYEE SIGNATURE _____

